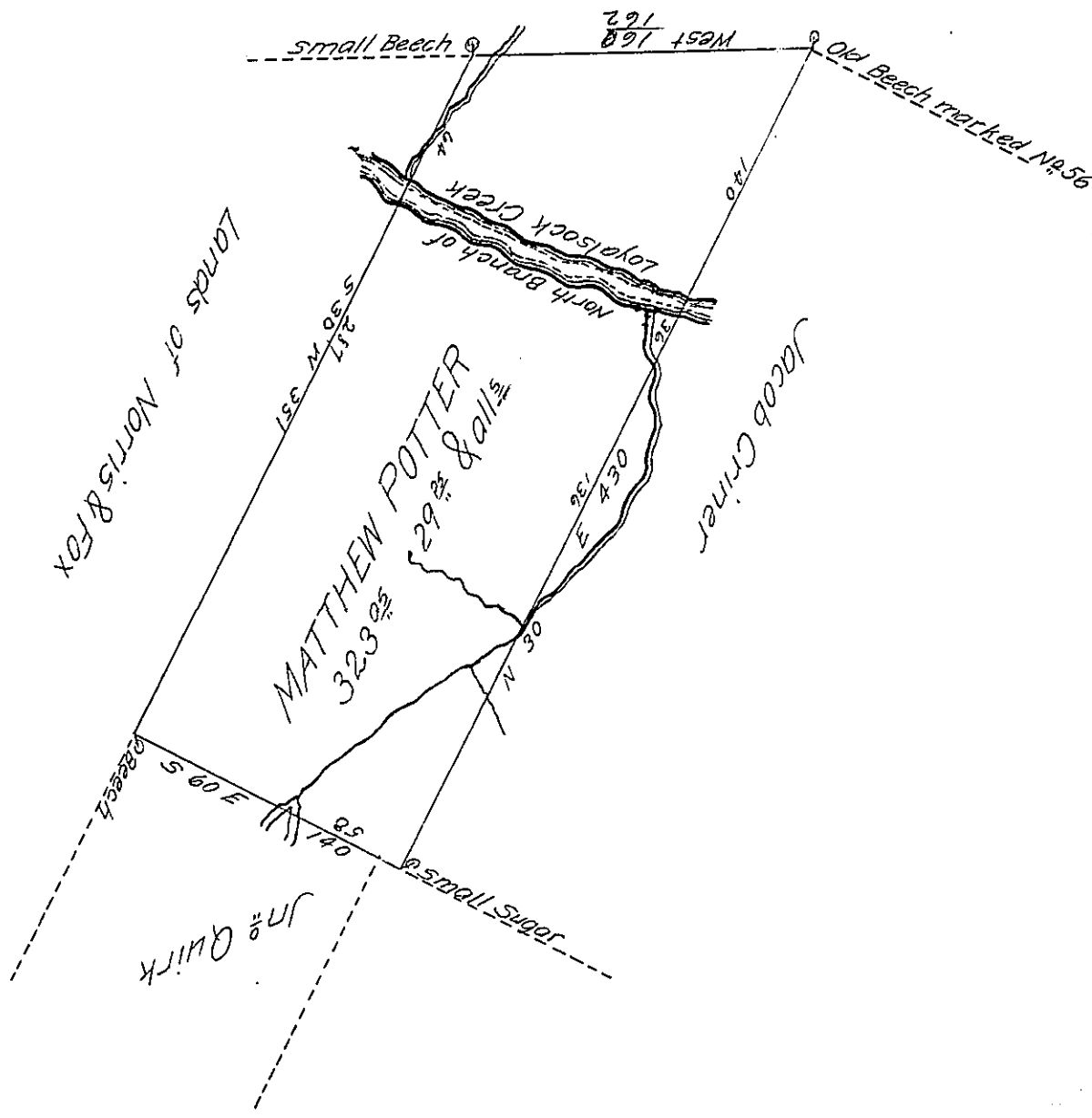


Dan! Wester



Situate on the North branch of Loyalsock Creek in Cherry Township in the County of Lycoming formerly North & Surveyed by Joseph J. Wallis D.S. on the 24th day of November 1785 and Resurveyed by me on the 17th day of April 1840 for Matthew Potter by Virtue of his Warrant for 300^{ac} bearing date the 17th day of August 1773, Containing three hundred and twenty three acres and twenty nine perches with allowance of Six per Cent for Roads &c.

To Jacob Sallade Esquire }
 Surveyor General }

Alexander Hamilton McHenry D.S.

IN TESTIMONY that the above is a copy of the original remaining on file in the Department of Internal Affairs of Pennsylvania, made conformably to an Act of Assembly approved the 16th day of February, 1833, I have hereunto set my Hand and caused the Seal of said Department to be affixed at Harrisburg, this twenty first day of May 1906

Spencer Perry
 Secretary of Internal Affairs.